

Uno and Nano Prototype board.

This board can be used to build and deploy projects in a short time as the main wiring has already been completed for the display with easy access to all inputs outputs.

Additional Facia kit available allows for project to be mounted for a more permanent finish

Uno board compatible

Nano board compatible

WeMos D1 Dev Board (limited use not lcd parallel but **IC2 OK**)

LCD wiring parallel installed direct to display using the following digital outputs

LiquidCrystal lcd(12,11,5,4,3,8)

Note The pins where chosen so as to allow the output D2 to be free for interrupt use if required.

You just need to install 10K variable resistor and 220ohm resistor

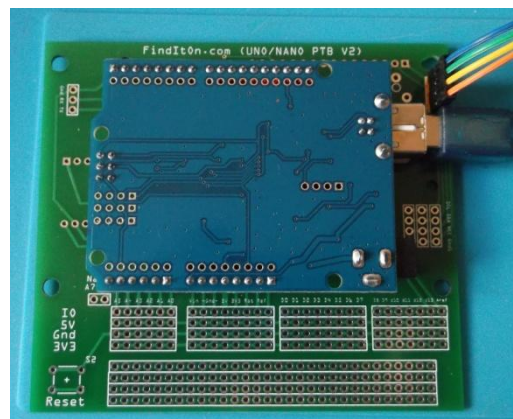
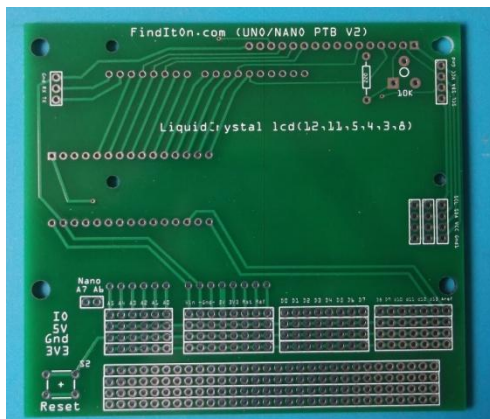
LCD wiring IC2 type using dedicated ports

Mounting holes for **20x4** and **16x2** displays

Reset button provision

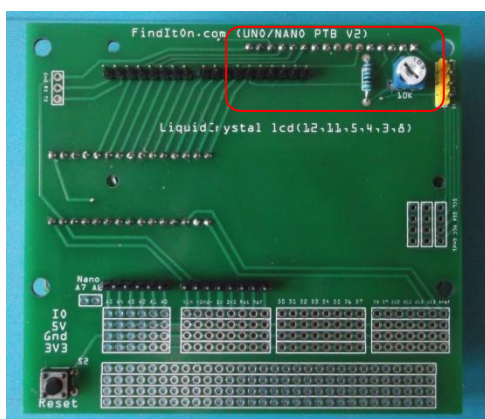
Outputs have power adjacent to its pin to allow easy connections.

Prototype Area to build your additional circuits



At its very basic you can mount an Arduino Uno or compatible face side down onto PCB and run a LCD from the IC2 port. This will require you to solder the pins onto the PCB.

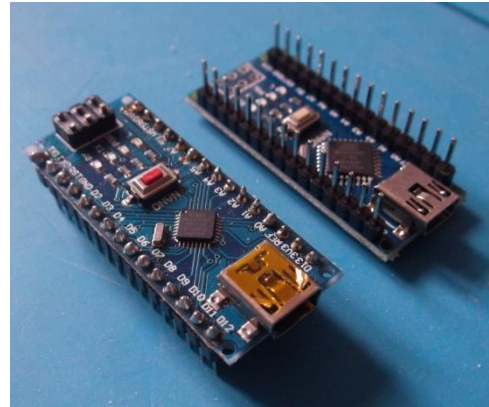
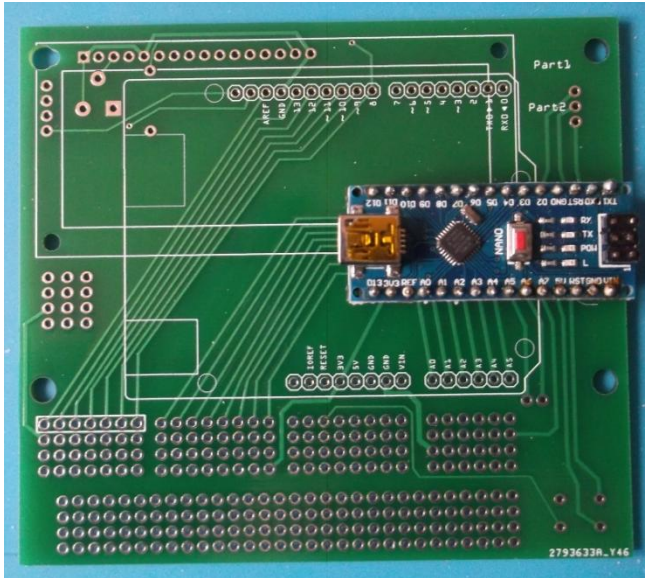
The alternative is to install a 10K variable resistor and 220 ohm resistor and solder the pins to connect the LCD directly on the opposite side. You can use mounting pillars for the display.



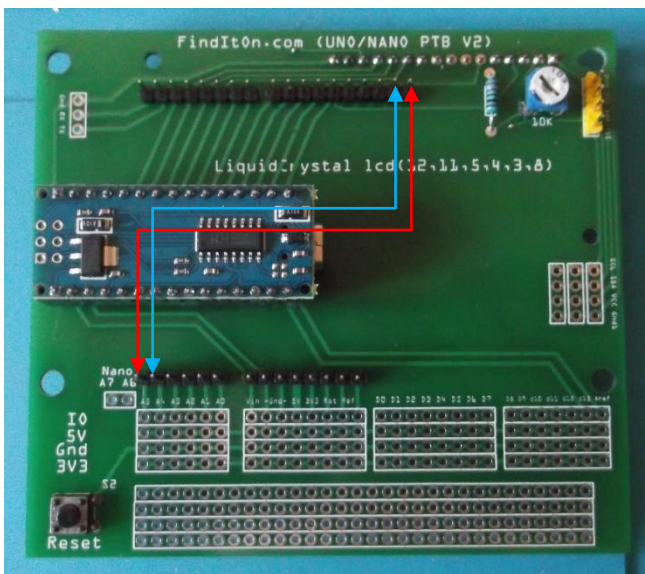
To mount the Nano you have two choices

Mount on the same side as the LCD or the opposite side.

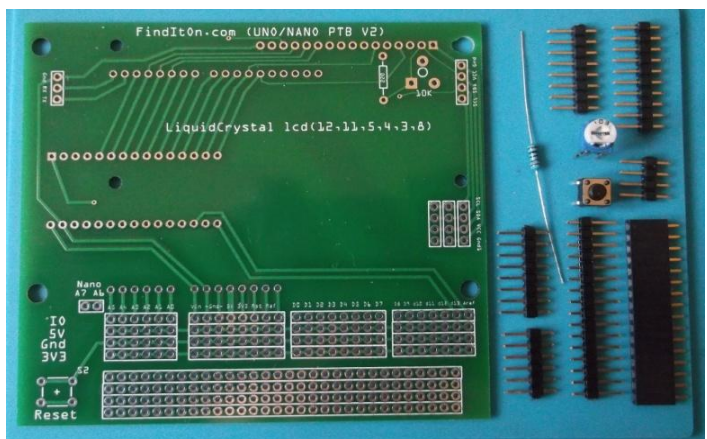
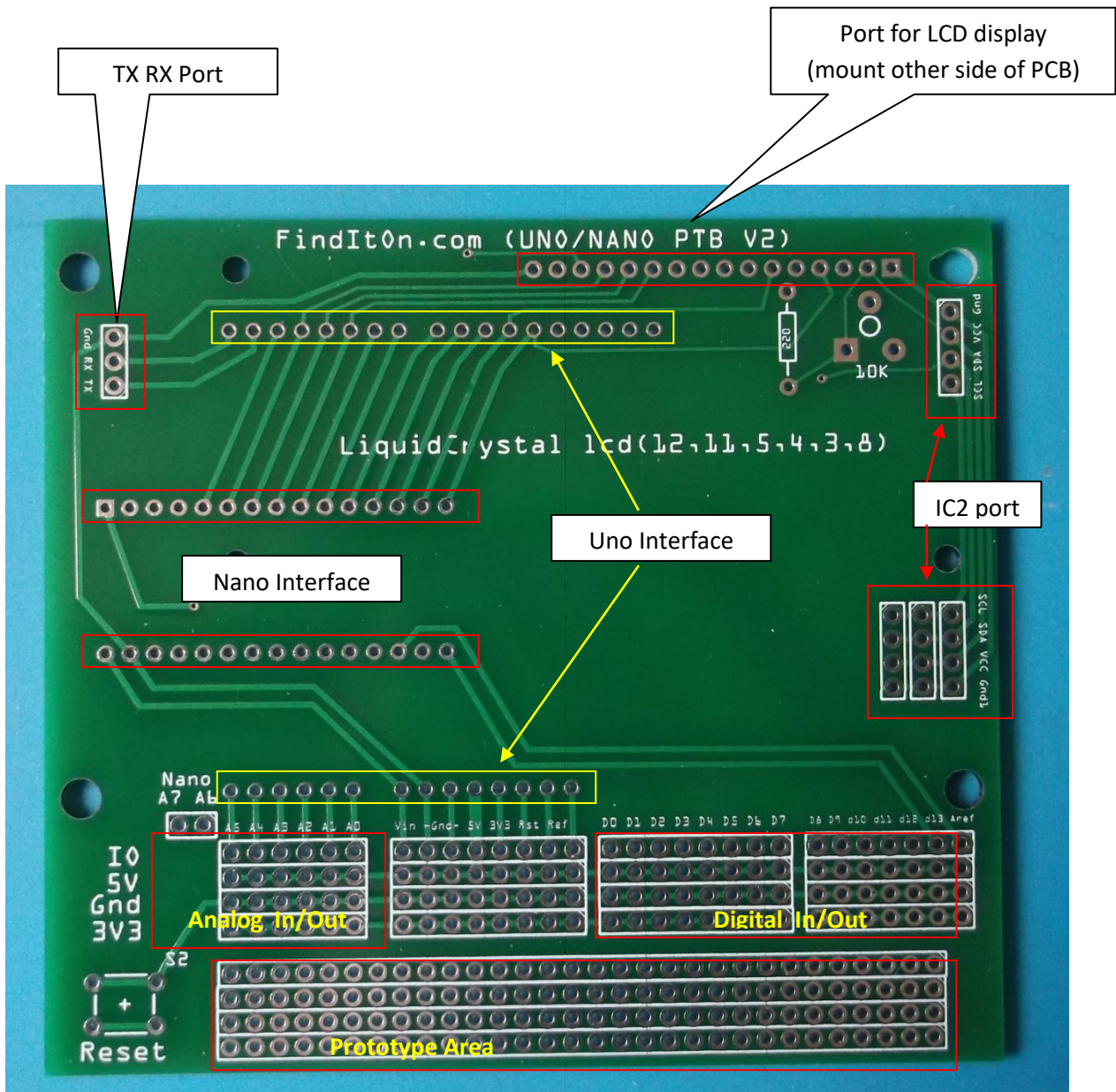
Mounting the LCD side will allow you to use the nano with standard soldered pins, but it makes access to USB port a little inaccessible when the LCD is mounted. This method IC2 Preferred.



Mounting on the component side will require the pins to be soldered on the nano with the headers upwards on the board. This will allow you to plug in the board in the correct orientation.



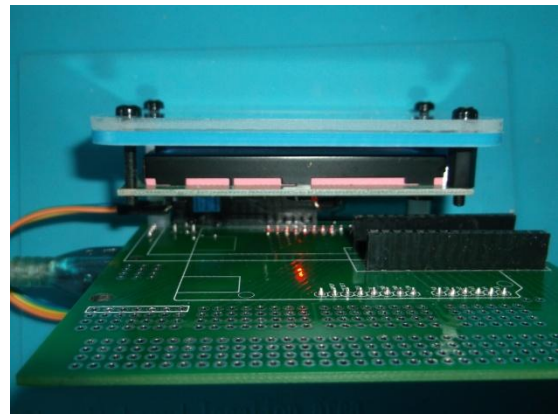
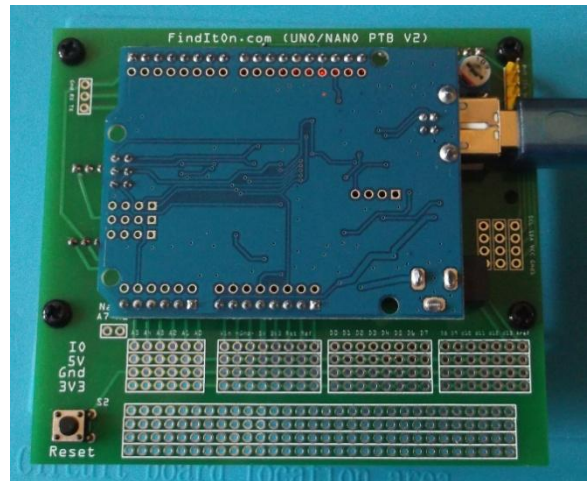
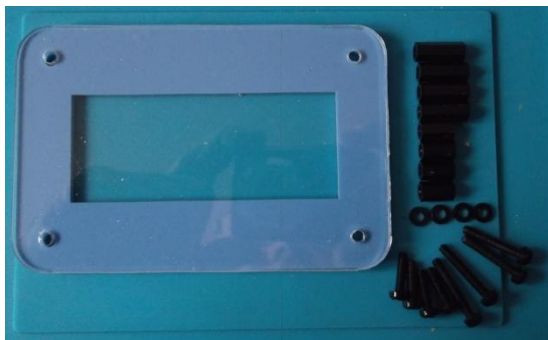
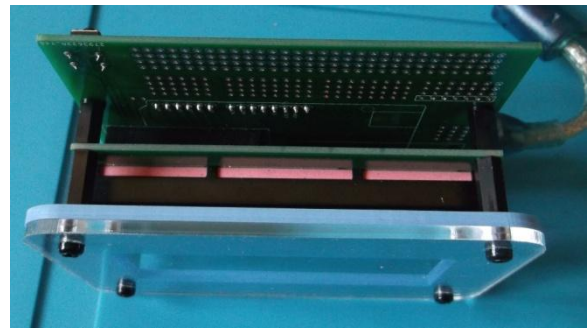
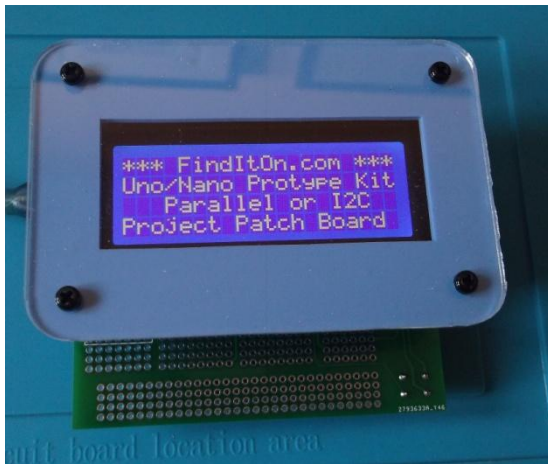
Using the IC2 port (in yellow above) with the Nano you will have to link A4 and A5 to Top right Pins as above. Or connect directly to A4, A5 and power.



- 1 x PCB
- 1 x 220 ohm resistor
- 1 x 10K ohm potentiometer
- 1 x reset switch
- 1 x male header pins
- 1 x 16 Female header

Facia Mounting Kit

Additional Facia kits are available that can be used to mount a 20 x 4 or 16 x 2 display
Available in Black, White, Blue, Red or Turquoise.



- 1 x Clear Front
- 1 x Coloured back (choice of Black, White, Blue, Red or Turquoise)
- 8 x M3 screws
- 8 x 10mm posts
- 4 x M3 washers

Disclaimer

Finditon.com and its staff cannot guarantee the information found here. While we use reasonable efforts to include accurate information, we make no warranties as to the accuracy of the content and assume no liability or responsibility for any errors or omissions in the content. Also as this is a kit of parts we assume no liability for damage due to incorrect wiring, soldering or assembly.

(c) 2021 FindItOn.com